



PYO NEWSLETTER



WELCOME TO THE INAUGURAL EDITION OF...

PYO's newsletter! I am thrilled to connect with you through this new platform and share the incredible work we are doing together. In this first issue, you will find stories of our expansion, new programming, and a spotlight of an employee who we can't be more proud of! With this quarterly newsletter, we aim to keep you informed, inspired, and engaged with our cause. Thank you for being an essential part of our journey.

Things To Know:

- Sweet Sharlene's is open for the 2025 Season
- Sponsor Sweet Sharlene's by adding your business or logo to our sponsorship wall for \$200.
- NEPA Gives 24-hour regional Fundraiser - June 5th & 6th
- Chicken Dinner Fundraiser June 21st in Troy
- Get Tickets for the Troy Fair July 21-26 reach out to DSP staff before May 30th for any Individual who would like to attend.

Visit our website and Facebook for more details!

OUR MISSION

We create opportunities for all people, regardless of their abilities, by focusing on community involvement, personal achievement, lifelong learning, and employment.



More Information and Employment Opportunities can be found at:

www.PennYorkOpportunities.org

STAFF SPOTLIGHT

ATHENS BUSINESS ASSOCIATION PERSON OF THE YEAR

We are thrilled to spotlight Aubrey, who has been honored with the prestigious Athens Business Association Person of the Year award!

Aubrey's dedication and passion for her work as a Business Enterprises Manager at Penn-York Opportunities have made a significant impact on our community. She has such a commitment to creating inclusive and engaging community events that have brought joy and connection to countless individuals.

Aubrey has organized numerous events that foster a sense of belonging and community spirit that include:

- The Grand Opening of Java Junction.
- Sweet Sharlene's Birthday Party
- Enterprise Center Open House
- Sweet Sharlene's Fall Festival
- Inaugural Tree Lighting Event

She has also connected PYO's consumers with numerous events that were never attended before that include:

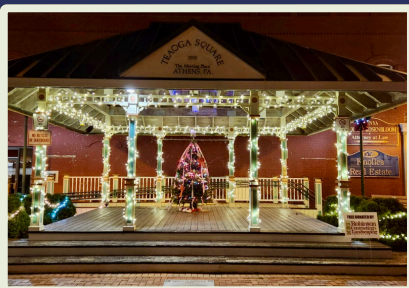
- Broken Road Bees Bee Celebration Event
- Sayre Health Care Fall Fest
- IRFCU Member Appreciation Event
- Bradley Farms Tractor Treat
- Holiday Window Painting & Window Cleaning

Aubrey's passion for advocating for individuals with disabilities is evident in everything she does. She continuously seeks new ways to bridge gaps and create meaningful connections, ensuring that everyone has the chance to be an active and valued member of the community.

We congratulate Aubrey on this well-deserved recognition and look forward to seeing her continue to inspire and innovate in her role at Penn-York Opportunities.



Aubrey Wiles
PYO Manager & Athens
Business Association's
Person of the Year



NEW HAPPENINGS

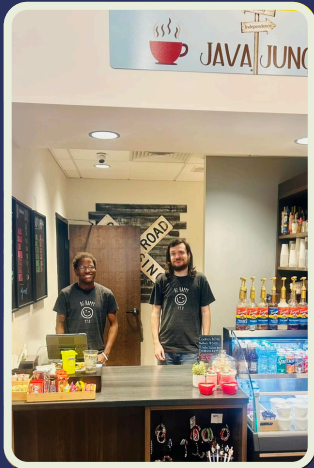
EMPLOYEE TRAINING

PYO has created a new program called the Business Enterprises Training program that creates small businesses with the sole purpose of hiring and training Individuals with disabilities to ultimately find long-term employment within the community.

Sweet Sharlene's Ice Cream Shop, Java Junction and the newly forming Village Hub Cafe are all part of this growing program.



JAVA JUNCTION



Opened in June of 2024, Java Junction is located in the Ingersoll-Rand Federal Credit Union branch office in Sayre. This partnership has created a perfect blend (coffee pun intended) of community outreach, workforce development and employee appreciation.

Stop in and treat yourself to the specialty drink of the day made with quality ingredients from Broken Road Bees, Bradley Farms and Coffee Monster! You can even purchase homemade candles and bracelets!

COMING SOON!!

We continue to find creative ways to prepare our Individuals for long-term employment. The Village Hub Cafe, located inside The Enterprise Center, will be our largest and most in-depth small business yet! With a kitchen to serve hot and cold meals, our employees will have the chance to cook and create sandwiches, serve a variety of drinks, and serve tables. We invite the community to keep a look out for our Grand Opening.

VILLAGE HUB CAFE



Support the work of our Individuals at all of these locations by donating today!

ECHO LEARNING LAB

PYO launched an exciting new program in partnership with the Athens Area School District and IRFCU called the

ECHO Learning Lab

Employment ● Choice ● Honor ● Opportunity

ECHO Learning Lab is embedded into the community and is designed to help transitional students and students with learning plans practice basic life, health, safety, and employment skills needed to live and work independently.

Since December, PYO has impacted six students from Athens Area. The students had 9 Job Shadow experiences, learned about community resources at Best Transit, WIC, and Robet Packer Hospital and began building their resumes and how to live independently.



THANK YOU SPONSORS AND PARTNERS

Sayre American Legion Post #283

Ardelle Nagle

Valley Energy

First Citizens Community Bank

Expand Energy/Chesapeake Operating, LLC

Tioga Downs Regional Community
Foundation

Griffin, Dawsey, Depapola & Jones, PC
Corporate Account

Randy and Nancy Williams Family Foundation

Cathy Meisenhelter

United Way of Bradford County
Walmart
Unico

The Enterprise Center

Athens Area School District

Sayre Area School Districts

Friends of Valley Arts

Ingersoll Rand Federal Credit Union

AllOne Charities

Bradford Solar/Vesper Energy

Penn-York Opportunities

101 S. Main Street

Athens, PA 18810

